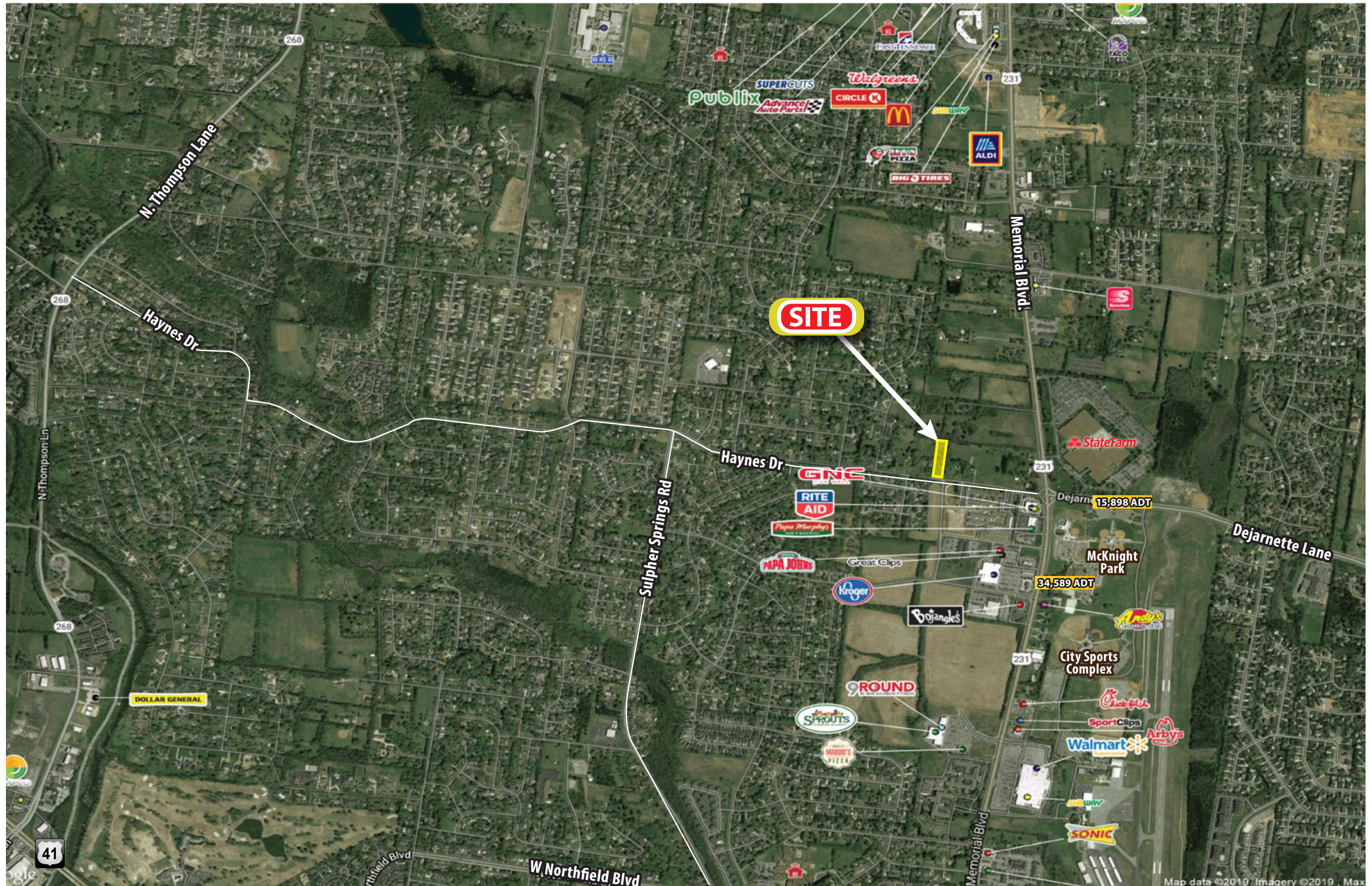




JOHN MIFFLIN
Broker
JohnMifflin@MifflinREC.com
615.294.2526 MIFFLINCOMMERCIAL.COM





Zoned Commercial Highway

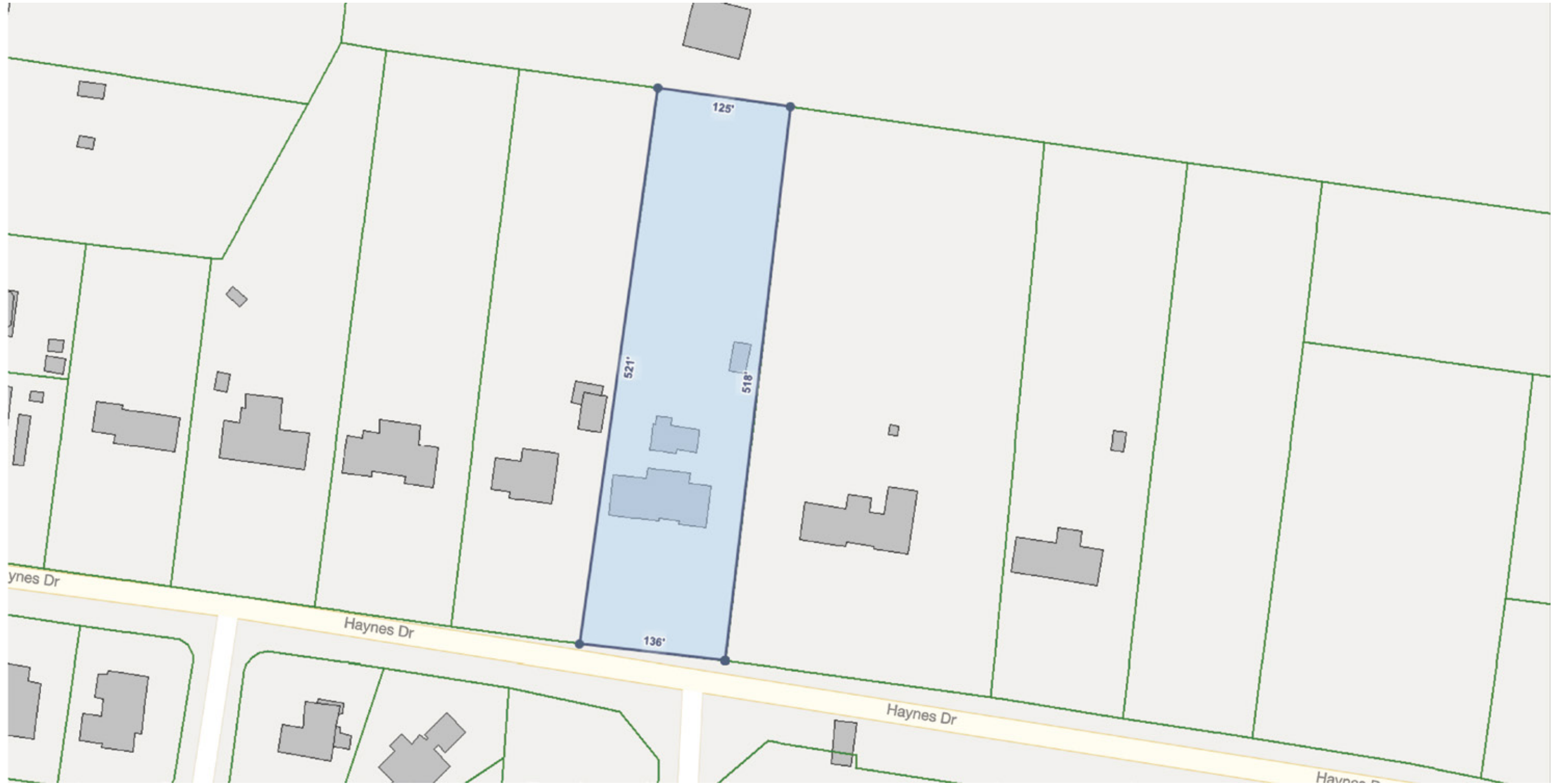
Lot Dimensions 136' x 520'

Utilities in Haynes Dr.

360 degree trade area with convenient access

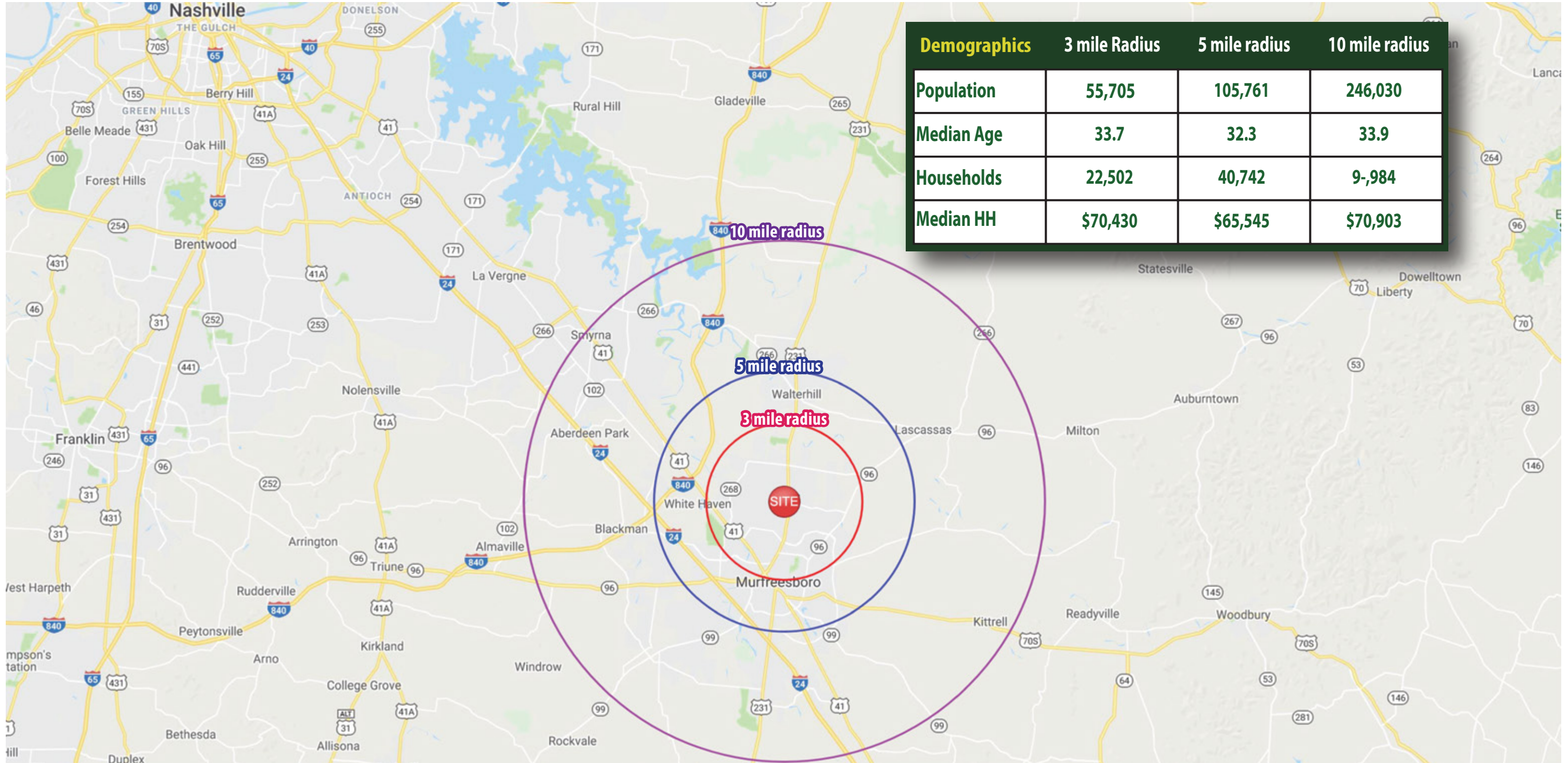


210 HAYNES DR. at MEMORIAL BLVD MURFREESBORO, TENNESSEE





210 HAYNES DR. at MEMORIAL BLVD MURFREESBORO, TENNESSEE







210 HAYNES DR. at MEMORIAL BLVD MURFREESBORO, TENNESSEE

EXCLUSIVELY MARKETED BY



201 E. Main St., Ste 420 • Murfreesboro, TN 37130



John G. Mifflin

The statements, figures and conclusions contained herein and attached as exhibits were obtained from sources considered to be reliable. Mifflin Real Estate assumes no responsibility for the accuracy. Property is subject to availability and price is subject to change, either or both without notice.